

Why are trees
so important?

Take it further:

THINK

What curiosity questions can you ask?

e.g. What do trees do? Why do humans need trees to survive? Why do trees grow in forests? What is a rainforest and why is it important to the planet to have so many different types of trees?

FEEL

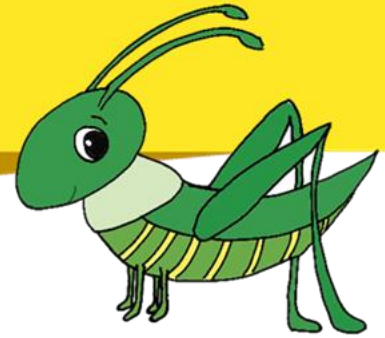
How might different people feel about this?

e.g. How do you feel when you are surrounded by trees? Why do you think trees make us feel good? What sort of feelings do you have if you see a tree being cut down?

CONNECT

What links can you start to make?

e.g. . What sort of creatures live in trees? Why do we need ancient forests and old woodlands? Why isn't planting a new tree when you cut down a tree the same as keeping an old tree?



Activity ideas:

1. All sorts of bits and pieces from trees fall to the ground and then sit underneath and slowly decompose back into the earth. Trees drop leaves, blossom, fruit, twigs, bark etc. Take a walk in your garden, down your street or around your neighbourhood and see what 'tree leftovers' you can find and collect. Bring them back home to create an art collage. You might decide to make 'tree animals' with your leftovers, or a creative tree picture. Or you might decide to research which trees each element has come from. Use this handy tree dictionary to help:
[Online plant guide](#)
2. Did you know that trees talk to each other?! There are amazing networks of communication underneath the ground that trees use to pass messages to one another, to support each other and to build communities. Take a look at this short video to learn more:
[How trees secretly talk to each other](#)
3. How many trees live in your local area? Take a walk in your local area and (if possible) photograph all of the different sorts of trees that you see (if there are a lot you may decide to stop at around 10 or 15). When you get home, look up each type of tree and make a tree chart to note down which trees live in your neighbourhood, and (if time and interest allows) what sort of creatures live on each tree. Use this handy tree dictionary to help you: [A-Z Guide of trees](#)
4. Take a look at this range of tree-related projects and activities that you can do in your home: [Project Tree](#)

USE THE **THINKER'S GUIDE TO HELP YOU*

What other activities could you do?
