A high-angle, top-down photograph of a diverse group of people sitting in a circle on a light-colored, textured ground. The image focuses on the lower half of the individuals, showing their legs, feet, and various styles of shoes and socks. The people are of different ethnicities and are dressed in casual attire. The text is overlaid on the left side of the image.

A series of **Global Thinking** talks and workshops  
designed to broaden perspectives and develop  
emotional intelligence



Many young people across the world grow up with 'local lives', rarely coming into contact with people from outside their identity groups. When young people learn through a global lens it widens their horizons and helps them to grow as individuals.

Working together cultivates a sense of belonging and helps young people to open up to new ideas, accept new norms and embrace new ways of seeing the world

This series of thought provoking *Global Thinking Talks and Workshops* support PSHE and SMSC learning objectives and are a great introduction or deepening to the ThoughtBox curriculum.



# Get on board with our **Global Thinking Workshops**

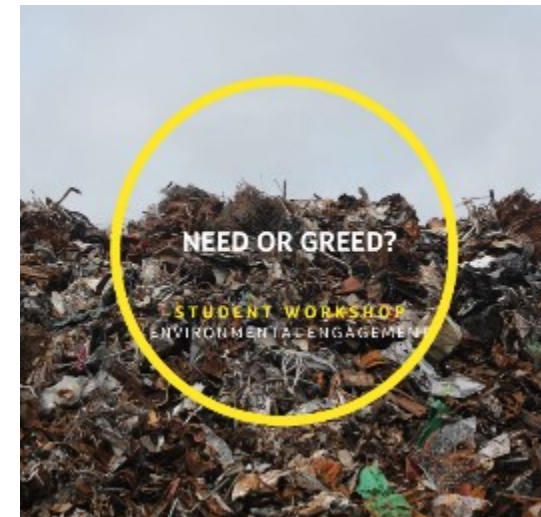
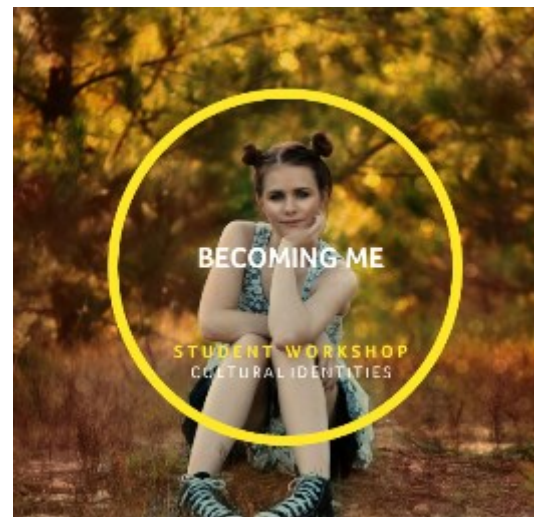




Following an initial team-building activity, students are set a range of challenges encouraging them to learn to work together, overcome differences, practise deep-listening and conflict resolution and explore diversity. Each of our interactive talks and workshops supports SMSC education and will enable students to:

- ❑ Use creativity, teamwork and imagination to solve challenges and make connections
- ❑ Feel confident expressing opinions and exploring difficult questions
- ❑ Open up core global topics to develop interest in their own learning and their responsibilities as global citizens
- ❑ Walk in the shoes of others, think critically and explore individual and collective values

We offer workshops based on key themes from the ThoughtBox curriculum:





## BECOMING ME

STUDENT WORKSHOP  
CULTURAL IDENTITIES

## Becoming Me

**To be yourself in a world that is constantly trying to make you something else is the greatest accomplishment.**

*Becoming Me* explores the concept of identity, understanding where the labels come from that we are given – from the media to our own cultural context – and how our identities are both consciously and unconsciously shaped by the world around us.





# BECOMING ME

**STUDENT WORKSHOP**  
CULTURAL IDENTITIES

## Overview

By engaging in a series of challenges and discussions focusing on the impact of social media, globalisation and social culture on our identities, this interactive workshop asks students to question the influences of our environment on identity, mental health and happiness.

## Key questions explored:

- Who or what defines our identity?
- Why do we give people labels?
- How much do the labels that we are given define who we are?
- Is our online identity a different part of ourselves?
- How is our identity shaped by our culture?
- How can we celebrate diversity in our communities?



## Need or Greed?

**The world doesn't belong to us, we belong to it.**

*Need or Greed?* immerses students into the world of consumption by challenging them to consider the choices we are being asked to make when it comes to what we buy and what we do with our 'stuff' when we no longer want it.



**NEED OR GREED?**

**STUDENT WORKSHOP**  
ENVIRONMENTAL ENGAGEMENT



## Overview

By engaging in a series of challenges and discussions focused on the food and textile industry (as well as taking a peek into our “rubbish habits” this interactive workshop will ask students to start questioning their own habits, engage with the effects of their actions on other people and understand the differences between need and greed.

### Key questions explored:

- Why do we have so much “stuff”?
- Who or what is the biggest influence on our shopping habits?
- What happens to our stuff when we throw it ‘away’ and who is responsible for the mess we make?
- Where do our products come from and who is making them?
- Who decides what ‘looks or tastes good’ and why do we believe them?
- Where shall we put all of this stuff?



**NEED OR GREED?**

**STUDENT WORKSHOP**  
ENVIRONMENTAL ENGAGEMENT



## Connecting the Dots

**We are all co creators of the world in which we live.**

Understanding some of the challenges that we are facing in our current societies begins by joining the dots on how these issues are all connected.

Working together in small teams, *Connecting the Dots* will invite students to explore some of the biggest challenges we are facing today, such as immigration, homelessness and climate change, turning the issues inside out to find out what is really going on.



### CONNECTING THE DOTS

**STUDENT WORKSHOP**  
SOCIAL PERSPECTIVES





# CONNECTING THE DOTS

**STUDENT WORKSHOP**  
SOCIAL PERSPECTIVES

## Overview

By engaging in a series of challenges and discussions focusing primarily on the current refugee crisis, this interactive workshop will ask students to start questioning the links between passports and politics, homelessness and climate change and economics and emotional health.

## Key questions explored:

- Who decides where we can call home?
- Should a sense of security be a fundamental human right?
- What are some of the causes of global displacement?
- What does it mean to be a refugee or to be homeless?
- How are our life choices dictated by the colour of our passports?
- Why is belonging crucial to our happiness?



Stay on track with our  
**SMSC Interactive Talks**





Our interactive talks open the box on some of our most pressing global issues, engaging students in a range of social, cultural and environmental discussions helping them to start to feel more connected to the world around them.

### Our interactive talks aim to

- ❑ Encourage critical thinking and empathy building in order to make connections
- ❑ Open up core global topics to develop interest in their own learning and their responsibilities as global citizens
- ❑ Allow students to walk in the shoes of others, think critically and explore individual and collective values
- ❑ Support young people in making sense of the world around them.

We offer a range of talks focused on three key themes :







# HAPPINESS

WHERE DO WE ALL  
FIND HAPPINESS?

AN INTERACTIVE TALK



# IMMIGRATION & REFUGEES

WHERE DO WE  
ALL BELONG?

AN INTERACTIVE TALK



# WASTE

WHERE SHALL WE  
PUT ALL THIS STUFF?

AN INTERACTIVE TALK



# GLOBAL CULTURES

WHAT IS CULTURE?

AN INTERACTIVE TALK



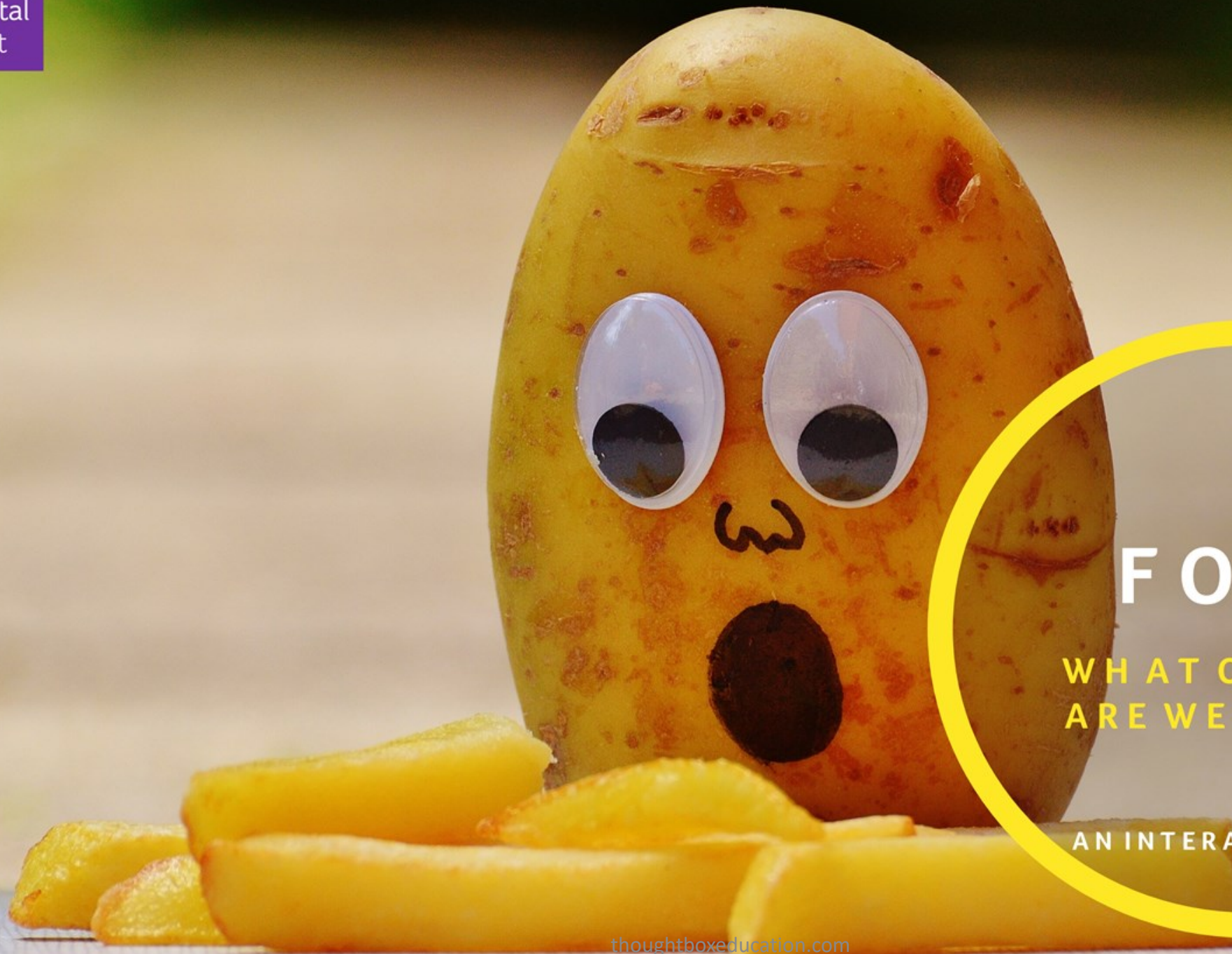


# VOLUNTOURISM

IS OUR HELP  
ACTUALLY HELPFUL?

AN INTERACTIVE TALK





# FOOD

WHAT ON EARTH  
ARE WE EATING?

AN INTERACTIVE TALK



# What schools are saying:

THE WORKSHOPS ARE GREAT FOR DEVELOPING FASCINATING DISCUSSIONS AND REALLY CHALLENGING STUDENTS TO THINK OUTSIDE OF THE BOX.

Deputy Head  
St Wilfrid's Catholic High, Yorkshire

THOUGHTBOX HAS BEEN A REAL HIT WITH THE SECONDARY PHASE. WE USE THE 30 MINUTE SESSIONS EVERY WEEK AND THEY BRING ABOUT SOME EXCELLENT DISCUSSION POINTS AND DEBATE.

Pav Tatla, Head of PSHE  
Guru Nanak Sikh Academy, Birmingham

THE RESOURCES ARE SO THOUGHT-PROVOKING AND STUDENTS ARE REALLY PUSHED TO THINK. IT'S AS IF YOU OFFER LITTLE SEEDS WHICH ARE THEN PLANTED INTO THE STUDENTS' MINDS WHERE THEY WILL GROW, SOMETIMES SOONER, SOMETIMES LATER.

Head of Year,  
Emanuel School, London

THOUGHTBOX IS THE BEST £600 I EVER SPENT – APART FROM THE GIFT I GAVE MY WIFE AFTER FORGETTING HER BIRTHDAY LAST YEAR..

Tony Lynch, Deputy Head  
Tuxford Academy, Nottinghamshire

WE REGULARLY USE THOUGHTBOX RESOURCES IN OUR PSHEE LESSONS AND ARE INVARIABLY IMPRESSED BY THE QUALITY OF THE RESOURCES AND THE THOUGHT THAT GOES INTO THE LESSON PLANS.

Sara Williams-Ryan, Head of Pastoral  
St Emanuel School, London

VERY CREATIVE, VERY INTERACTIVE, VERY CONTEMPORARY.  
WHAT A WONDERFUL THING YOU ARE DOING!

Nano Chatfield  
Girls Foundation, Tanzania



# Practical Information



**Duration:** 1 hour (interactive talk)  
or half day/full day (Workshop)

**Format:** Talks, team challenges and group activities for SMSC learning

**Group Size:** 10-200 students

**Relevant Ages:** 10-18 years (KS3-5)

**Facilitator:** ThoughtBox Teachers (15yrs+ experience in the classroom)

All of our SMSC Global Thinking talks and workshops are fully resourced and can be crafted to fit your specific agenda and requirements. Just drop us a line and tell us what you're looking for.

More information on our talks and workshops can be found by visiting [thoughtboxeducation.com/talks-workshops](https://thoughtboxeducation.com/talks-workshops)



**ThoughtBox Members:** Our Gold membership includes a full-day workshop of your choice plus one of our Interactive Talks.

**Non-members:** Our full day workshops are £1000 whilst our half-day workshops are £600\* and Interactive Talks start at just £250.

\*plus travel if over 100 miles from Exeter

**Let's have a conversation!**

rachel@thoughtboxeducation.com | +447970 157883

[thoughtboxeducation.com/talks-workshops](https://thoughtboxeducation.com/talks-workshops)

